

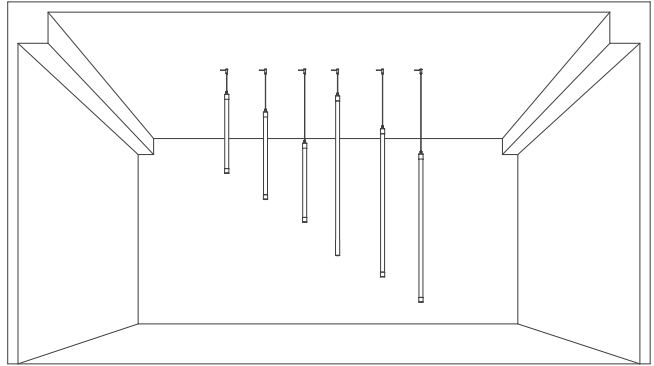
Installation Manual

NNR25 Vertical suspension accessories

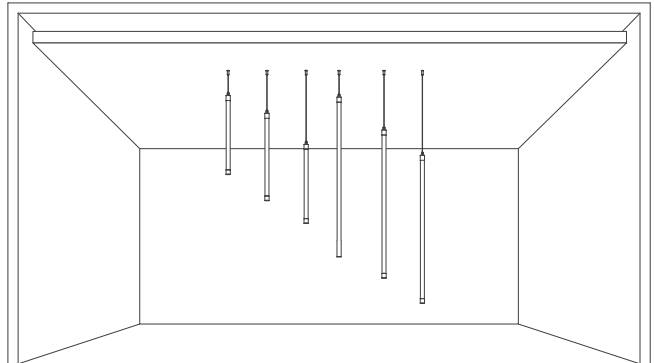
V1.1



Side/ Cement Ceiling



Top/ Suspended Ceiling



Please read this manual carefully before installation, and install the product in the correct way.
Please keep it after reading, so that all users of this product can check it at any time.

Prepare materials



Neon strip



Manual



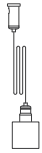
PC tube



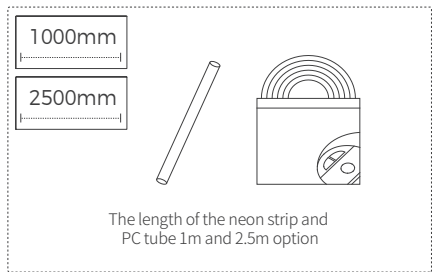
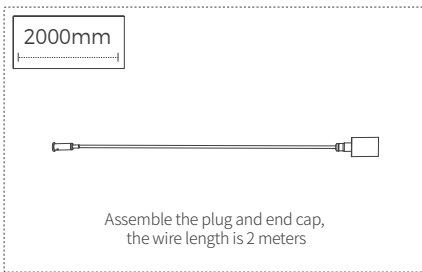
Rubber plug screw



Countersunk screw



Two-in-one wire



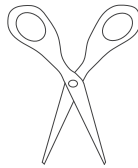
Installation tools



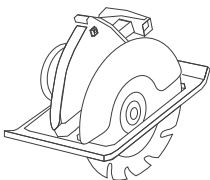
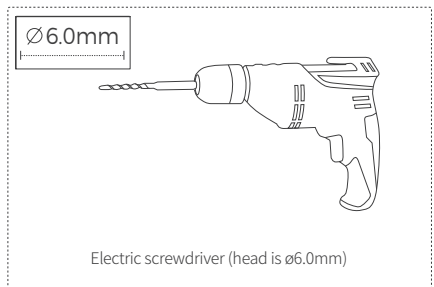
Phillips
screwdriver



Slotted
screwdriver



Scissors



Cutting Machine

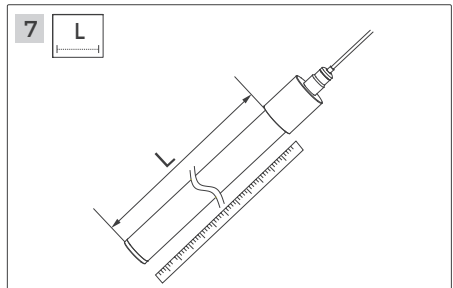
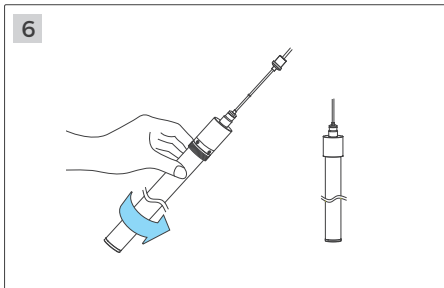
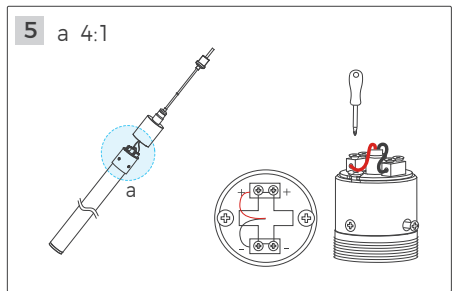
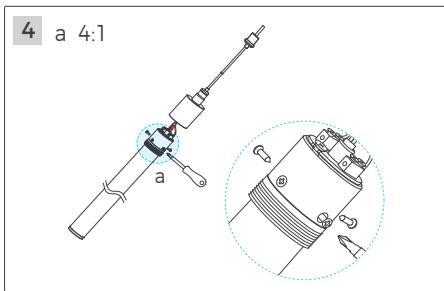
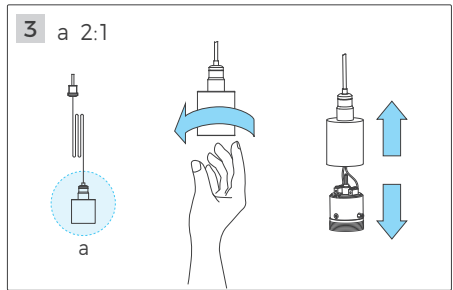
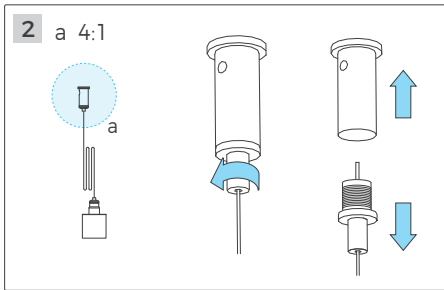
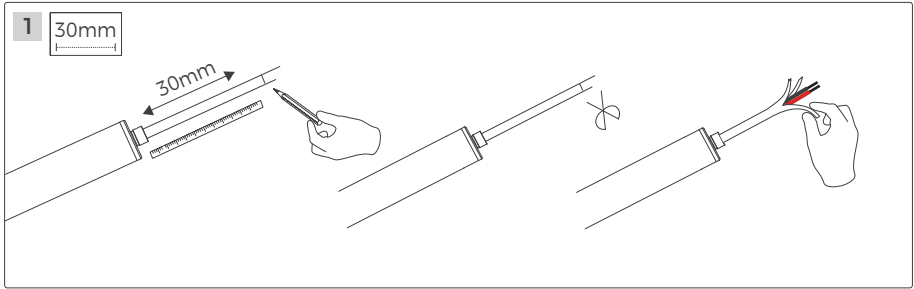


Pen



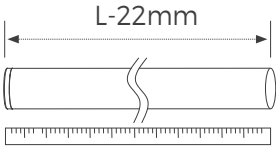
Tape measure

Installation Steps



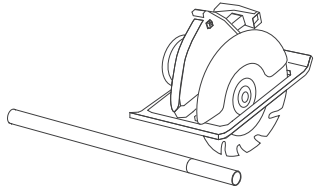
Installation Steps

8 L-22mm The PC tube is 22mm shorter than the light strip



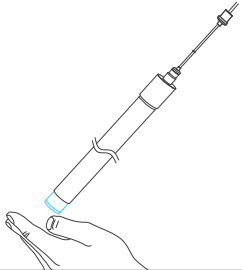
A diagram showing a cylindrical PC tube above a ruler. A double-headed arrow above the tube is labeled "L-22mm", indicating the length of the gap between the tube and the light strip below it.

9 L-22mm



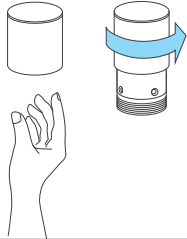
An illustration of a circular saw cutting through a PC tube. A dimension line above the tube is labeled "L-22mm".

10



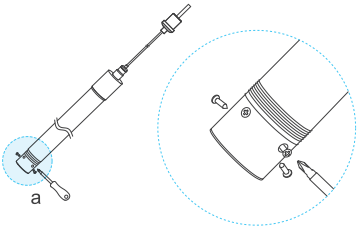
A hand is shown applying adhesive from a syringe to the end of the PC tube.

11



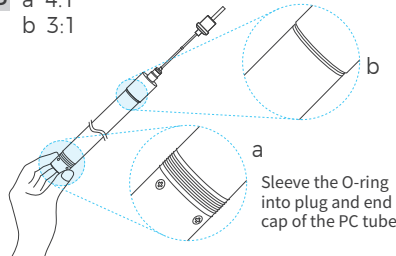
A hand is shown inserting a cylindrical cap into the end of the PC tube. A blue arrow indicates the direction of insertion.

12 a 4:1



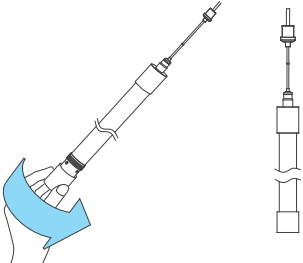
A hand is shown applying adhesive from a syringe to the cap. A circular inset shows a close-up of the cap with a brush applying adhesive to its inner surface. The inset is labeled "a".

13 a 4:1
b 3:1



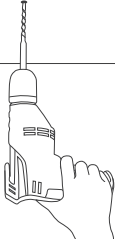
A hand is shown applying adhesive from a syringe to the cap. Two circular insets show close-ups of the O-ring being inserted into the cap. The insets are labeled "a" and "b". A text box says "Sleeve the O-ring into plug and end cap of the PC tube".

14



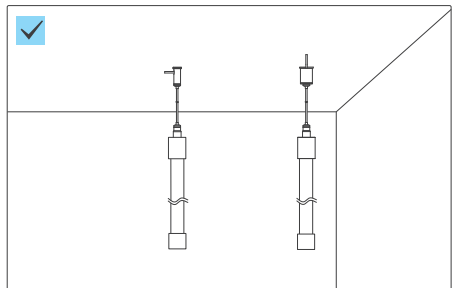
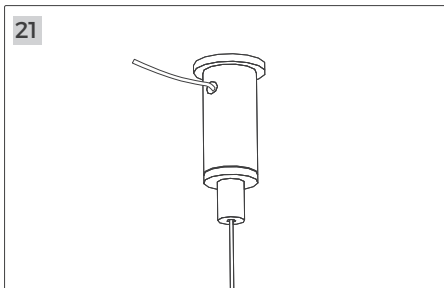
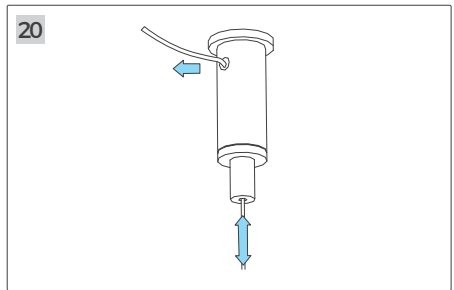
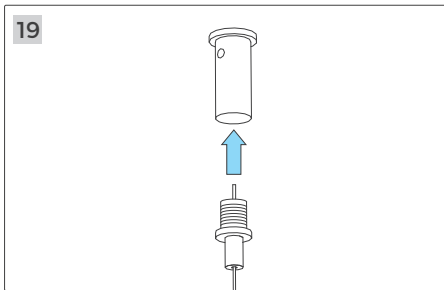
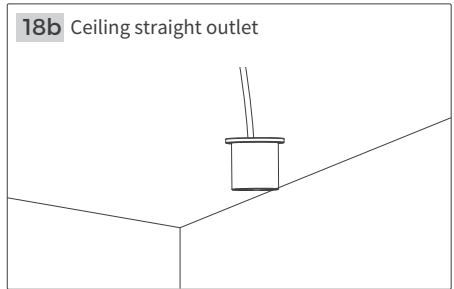
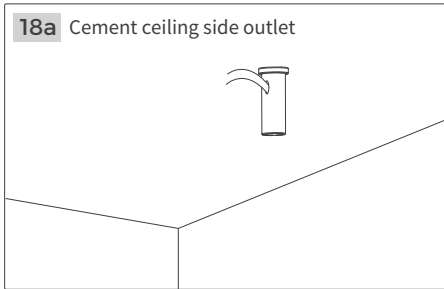
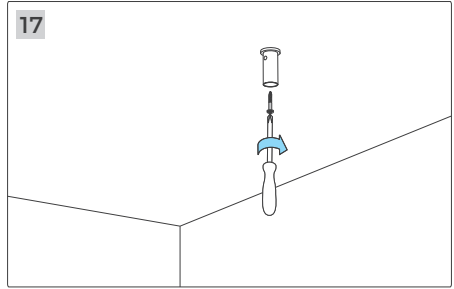
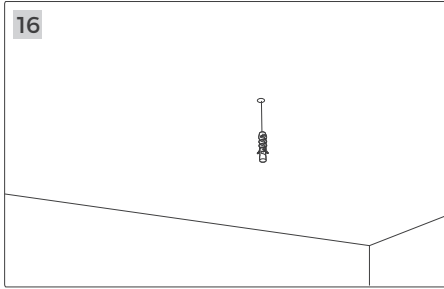
A hand is shown attaching the cap to the end of the PC tube. A blue arrow indicates the direction of attachment. A vertical diagram to the right shows the cap and tube joined together.

15



A hand is shown using a power drill to drill a hole into a wall.

Installation Steps





Parameters

Code	Wire length	Load bearing	Outlet	Adaptation model
AS-NNR25VHS-1000	2M	4kg	Side	NNR25-XXCSN050CC0100
AS-NNR25VHS-2500	2M	4kg	Side	NNR25-XXCSN050CC0250
AS-NNR25VHD-1000	2M	4kg	Top	NNR25-XXCSN050CC0100
AS-NNR25VHD-2500	2M	4kg	Top	NNR25-XXCSN050CC0250



Tel: +86-755-2923-1888
E-mail: colors@colorsled.com
Web: www.colorsled.com
Add: Building A5, Qixing Wisdom Park, Shiyan Youth Road,
Bao'an District, Shenzhen, China

